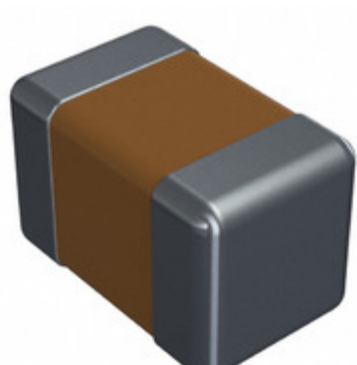


CDR01BX221BMZRAT



Part Number: [CDR01BX221BMZRAT](#)
Manufacturer: [Electro-Films \(EFI\) / Vishay](#)
Description: CAP CER 220PF 100V 20% BX 0805
Data sheet: [CDR Series \(MIL-PRF-55681\)](#)

RoHS Status: Contains lead / RoHS non-compliant
Ship From: Hong Kong
Shipment Way: DHL/Fedex/TNT/UPS/EMS

Images are for reference only.
 See Product Specifications for product details.
 Buy CDR01BX221BMZRAT with confidence from
 Component-World.HK, 1 Year Warranty

[Request For Quotation](#)

PRODUCT PARAMETER

Part Number	CDR01BX221BMZRAT	Manufacturer	Electro-Films (EFI) / Vishay
Description	CAP CER 220PF 100V 20% BX 0805	Lead Free Status / RoHS Status	Contains lead / RoHS non-compliant
Quantity Available	188589 pcs	Data sheet	CDR Series (MIL-PRF-55681)
Category	Capacitors	Voltage - Rated	100V
Tolerance	±20%	Thickness (Max)	0.055" (1.40mm)
Temperature Coefficient	BX	Size / Dimension	0.080" L x 0.050" W (2.03mm x 1.27mm)
Series	Military, MIL-PRF-55681, CDR01	Ratings	-
Packaging	Tape & Reel (TR)	Package / Case	0805 (2012 Metric)
Other Names	CDR01BX221BMZRAT-MIL	Operating Temperature	-55°C ~ 125°C
Mounting Type	Surface Mount, MLCC	Moisture Sensitivity Level (MSL)	1 (Unlimited)
Manufacturer Standard Lead Time	32 Weeks	Lead Style	-
Lead Spacing	-	Lead Free Status / RoHS Status	Contains lead / RoHS non-compliant
Height - Seated (Max)	-	Features	-
Failure Rate	R (0.01%)	Detailed Description	220pF ±20% 100V Ceramic Capacitor BX 0805 (2012 Metric)
Capacitance	220pF	Applications	General Purpose

Component-World.com is a Reliable Stocking Distributor of Electronic Components. We specialize in all Electro-Films (EFI) / Vishay series electronic components. We have 188589 pieces of Electro-Films (EFI) / Vishay CDR01BX221BMZRAT in stock available now. Request a quote from electronics components distributor at Component-World.com, our sales team will contact you within 24 hours.
 RFQ Email: info@Components-World.com

RELATED PRODUCTS

	Part#: CDR01BX221BKZSAC Description: CAP CER 220PF 100V BX 0805	Manufacturers: Electro-Films (EFI) / Vishay	RFQ
	Part#: CDR01BX222BKMMAT Description: CAP CER 2200PF 100V BX 0805	Manufacturers: Electro-Films (EFI) / Vishay	RFQ
	Part#: CDR01BX221BKZMAT Description: CAP CER 220PF 100V 10% BX 0805	Manufacturers: Vishay Vitramon	RFQ
	Part#: CDR01BX222BKMPAB Description: CAP CER 2200PF 100V BX 0805	Manufacturers: Electro-Films (EFI) / Vishay	RFQ
	Part#: CDR01BX222BKMMAC Description: CAP CER 2200PF 100V BX 0805	Manufacturers: Electro-Films (EFI) / Vishay	RFQ
	Part#: CDR01BX221BMZSAC Description: CAP CER 220PF 100V BX 0805	Manufacturers: Electro-Films (EFI) / Vishay	RFQ
	Part#: CDR01BX221BMZPAT Description: CAP CER 220PF 100V 20% BX 0805	Manufacturers: Electro-Films (EFI) / Vishay	RFQ
	Part#: CDR01BX221BMZSAT Description: CAP CER 220PF 100V 20% BX 0805	Manufacturers: Electro-Films (EFI) / Vishay	RFQ
	Part#: CDR01BX222BKMMAR Description: CAP CER 2200PF 100V BX 0805	Manufacturers: Electro-Films (EFI) / Vishay	RFQ
	Part#: CDR01BX222BKMPAC Description: CAP CER 2200PF 100V BX 0805	Manufacturers: Electro-Films (EFI) / Vishay	RFQ
	Part#: CDR01BX221BMZMAT Description: CAP CER 220PF 100V 20% BX 0805	Manufacturers: Electro-Films (EFI) / Vishay	RFQ
	Part#: CDR01BX221BKZRAT Description: CAP CER 220PF 100V 10% BX 0805	Manufacturers: Vishay Vitramon	RFQ
	Part#: CDR01BX222BKMMAP Description: CAP CER 2200PF 100V BX 0805	Manufacturers: Electro-Films (EFI) / Vishay	RFQ
	Part#: CDR01BX222BKMMAB Description: CAP CER 2200PF 100V BX 0805	Manufacturers: Electro-Films (EFI) / Vishay	RFQ
	Part#: CDR01BX221BKZMAB Description: CAP CER 220PF 100V BX 0805	Manufacturers: Electro-Films (EFI) / Vishay	RFQ
	Part#: CDR01BX222BKMMAJ Description: CAP CER 2200PF 100V BX 0805	Manufacturers: Electro-Films (EFI) / Vishay	RFQ
	Part#: CDR01BX221BKYSAT Description: CAP CER 220PF 100V BX 0805	Manufacturers: Electro-Films (EFI) / Vishay	RFQ
	Part#: CDR01BX221BMWPAB Description: CAP CER 220PF 100V BX 0805	Manufacturers: Electro-Films (EFI) / Vishay	RFQ
	Part#: CDR01BX221BKZSAT Description: CAP CER 220PF 100V 10% BX 0805	Manufacturers: Vishay Vitramon	RFQ
	Part#: CDR01BX221BKZPAT Description: CAP CER 220PF 100V 10% BX 0805	Manufacturers: Vishay Vitramon	RFQ

Related keywords for CDR01BX221BMZRAT

Electro-Films (EFI) / Vishay CDR01BX221BMZRAT	CDR01BX221BMZRAT distributor	CDR01BX221BMZRAT supplier	CDR01BX221BMZRAT price
CDR01BX221BMZRAT download datasheet	CDR01BX221BMZRAT datasheet	CDR01BX221BMZRAT stock	buy CDR01BX221BMZRAT
Electro-Films (EFI) / Vishay CDR01BX221BMZRAT	Electro-Films (EFI) / Vishay CDR01BX221BMZRAT	Vishay Electro-Films CDR01BX221BMZRAT	Phoenix Passive Components / Vishay CDR01BX221BMZRAT